

Scrubber **jade 55blt**



Walk-behind machine with traction



Power supply 24V/180Ah



Theoretical hourly performance 3-5h



Cleaning width 558mm



Solution/recovery tanks 53/56l



Disc brush 1x558mm



Brushes pressure max. 30kg



Brush speed 140rpm

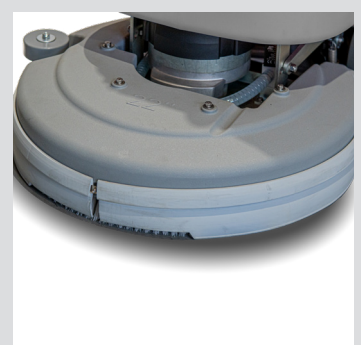


OPTIONAL



Lithium batteries

Designed for **deep cleaning**, the **Jade 55 BLT floor scrubber** guarantees maximum **efficiency** and **reliability**. Its **robust structure** and **traction system** make it ideal for **medium and large industrial and commercial environments**. Simple **maintenance** and **intuitive controls** make it easy to use for any operator.



TECHNICAL DATA

Manufacturer: Floorpul NV
Registered Office: Generaal Deprezstraat 10A
 8530 Harelbeke
 West-Vlaanderen - Belgium

Theoretical productivity:	2511 m²/h
Squeegee width:	770 mm
Brush motor:	450 Watt
Traction motor:	180 Watt
Maximum gradient:	10%
Forward speed:	3.2-4.5 km/h
Suction motor:	400 Watt
Suction vacuum:	120 mbar
Machine dimensions:	L: 1360 mm
	(w/o squeegee) W: 720 mm
	H: 1078 mm
Machine weight (w/o batteries)	102 kg
Battery compartment:	L: 405 mm
	W: 390 mm
	H: 377 mm
Class:	III
Protection level:	IP X3

WELLBEING and COMFORT FOR THE OPERATOR



sound pressure level L_{pa}
 (in accordance with annex DD IEC/EN 60335-2-72)

69.1 db (A)

Hand-arm vibration level
 (in accordance with annex EE IEC/EN 60335-2-72)

1.18 m/s²

DECLARATIONS



Machinery compliant with the safety and quality standards required by current European legislation and supplied with an EC Declaration of Conformity.



Machinery compliant with Regulation (EC) No. 1907/2006 (REACH) on the Registration, Evaluation, Authorisation and Restriction of Chemicals.



Machinery made with components that comply with Directive 2011/65/EU and 2015/863 (RoHS), which restricts the use of hazardous substances in electrical and electronic equipment.